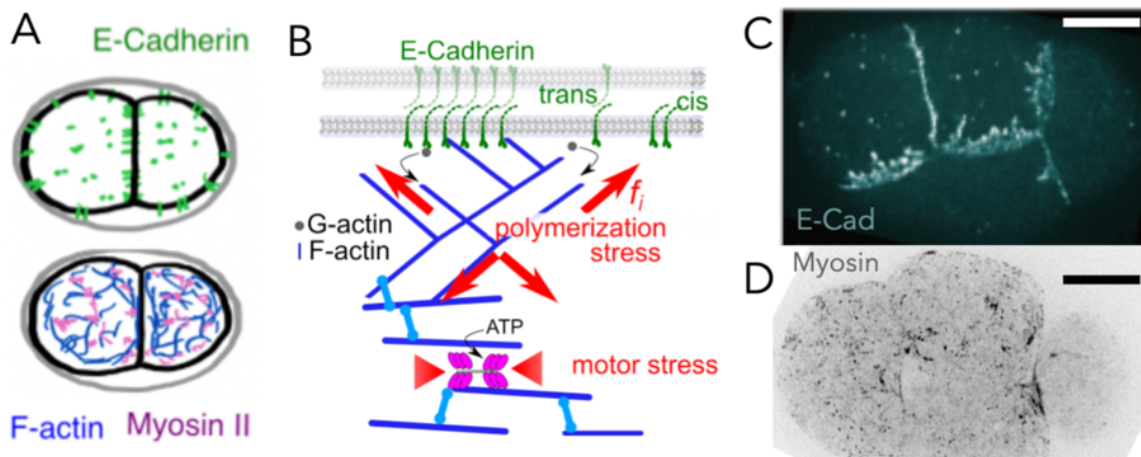


## Postdoctoral fellow positions offer

### Multiscale dynamics of cell contact formation and remodeling in early *C. elegans* embryos

Munro (Chicago, USA) & Lenne, Rupprecht (Marseille Luminy, France)

**Postdoctoral fellow positions** are available within our newly funded (NSF/ANR) international collaboration. The goal of our project is to understand how cell-cell contacts in early *C. elegans* embryos are shaped by the dynamic interplay of adhesion, biochemical signaling, and actomyosin contractility. Depending on the profile of the candidate, the successful post-doctoral candidate will develop new combinations of experimental techniques (genetics, biophysics, and advanced single molecule super-resolution microscopy) and mathematical modeling. Candidates will receive cross-training in two or more of these areas. Lab work will be based either in Chicago or in Marseille, with opportunities to travel between the two sites and participate in regular consortium meetings.



Adhesive and contractile networks in the early *C. elegans* embryo (A). Molecular players at cell-cell contacts (B). Distribution of E-Cadherin (C) and Myosin-II (D) at 4-cell stage

**Minimum Qualifications:** A PhD is required by start of appointment, in biology, bioengineering, biophysics, mathematical biology or a closely related field. Prior experience in, and/or commitment to, working in a highly interdisciplinary setting is essential.

**Salary:** Commensurate with qualifications and experience, plus benefits.

**Appointment Type:** Twelve-month full-time non-tenure track appointment, with potential to be extended annually for a maximum term of 4 years, subject to satisfactory performance and funding; the positions are currently funded for two years.

**Start Date:** September 2022 or later.

**To Apply:** Informal inquiries are welcome. We invite interested applicants to submit a letter of interest, a statement of prior research experience and professional interests, a CV, and contact information for three professional references to either: [emunro@uchicago.edu](mailto:emunro@uchicago.edu) or [pierre-francois.lenne@univ-amu.fr](mailto:pierre-francois.lenne@univ-amu.fr) and [jean-francois.RUPPRECHT@univ-amu.fr](mailto:jean-francois.RUPPRECHT@univ-amu.fr).

